

# BEAD BEATER

# MILLMIX 20

## MAIN FEATURES:

- > Fast and efficient disintegration of samples
- > Suitable sample prep for qPCR, HPLC
- > Used in forensic science, pharmacy, microbiology, biotechnology, veterinary, chemistry, geology, metallurgy, ecology, food and beverage control, nutrition,...

## LARGEST STROKE ON MARKET

## MOST HOMOGENIZED SAMPLE

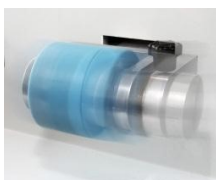
MILLMIX 20 is developed for scientists, who need efficient disruption of small amounts of sample.

### Easy to use

One knob controller together with bright LED display is simple to use and gives all important information at once.

### Powerful & Quick

Broad range of standard and custom designed tube holders makes MillMix 20 as a suitable tool for dedicated scientific work as well as daily routines. Efficient disintegration, homogenization and mixing in second.



### Most Advanced Technology

Powerful DC brushless motor, which is controlled by digital processor, needs no maintenance.

### Broad range of jars & tube holders

Largest Jar capacity 2 x 50 ml  
Hard steel and stainless steel jars  
Tungsten Carbide jar  
Rounded PTFE Jars  
Squared PTFE Jars  
Special adopters by customer requests available



### Applications

MillMix is useful tool for disintegration of many materials and can be used on different fields of science: microbiology, biotechnology, medicine, pharmacy, veterinary, chemistry, geology, metallurgy, nutrition, food and beverage control, forensic science,...



### TECHNICAL SPECIFICATONS

|                     |  |
|---------------------|--|
| Model               | MILLMIX 20   |
| Voltage             | 100V / 115V / 230V<br>50 - 60Hz  |
| Power               | 200VA  |
| Time                | 5s - 99min,<br>up to 10min in steps of 1sec,<br>above in steps of 10s, HOLD function |
| Vibrating frequency | 3 - 30Hz, in steps of 0,1Hz  |
| Stroke              | 32mm   |
| Max. Sample size    | ~ 20mm   |
| Max. volume         | 2 x 50ml   |
| Net weight          | 42kg   |
| Dimensions          | 365 x 425 x 225mm  |

| Grinding jar<br>(nominal vol) | Sample<br>amount | App. feed<br>size | Balls  |
|-------------------------------|------------------|-------------------|--------|
| 1,5 ml                        | 0,5 ml           | 1 mm              | Ø3 mm  |
| 1,5 ml                        | 0,5 ml           | 1 mm              | Ø5 mm  |
| 5,0 ml                        | 2,0 ml           | 2 mm              | Ø7 mm  |
| 10 ml                         | 4,0 ml           | 4 mm              | Ø10 mm |
| 25 ml                         | 10,0 ml          | 10 mm             | Ø15 mm |
| 50 ml                         | 20,0 ml          | 15 mm             | Ø25 mm |

*We reserve the right to alter specification details etc. without prior notice or liability!*

# DOMEL®

DOMEL, d.o.o., Otoki 21, 4228 Železniki  
BU Laboratory Systems, Na Plavžu 79, 4228 Železniki  
Phone: +386 4 5117 500 Fax: +386 4 5117 501  
WEB: <http://labs.domel.com> E-mail: [info.labs@domel.com](mailto:info.labs@domel.com)

# Accessories and Applications for MILLMIX 20

## ACCESORIES

| INOX Jars<br>(volume in ml) | HARD STEEL Jars<br>(volume in ml) | PTFE Jars<br>(volume in ml) | ZYRCONI Jars<br>(volume in ml) | TUNGSTEN CARBIDE Jars<br>(volume in ml) |
|-----------------------------|-----------------------------------|-----------------------------|--------------------------------|---|
| 1,5 / 5 / 10 / 25 / 35 / 50 | 1,5 / 5 / 10 / 25 / 35 / 50       | 50                          | 35                             | 25                                      |

| INOX Balls<br>( $\phi$ in mm) | HARD STEEL Balls<br>( $\phi$ in mm) | AGATE Balls<br>( $\phi$ in mm) |
|-------------------------------|-------------------------------------|--------------------------------|
| 3 / 5 / 7 / 10 / 12 / 20 / 25 | 3 / 5 / 7 / 10 / 12 / 25            | 10                             |

| GLASS Balls<br>( $\phi$ in $\mu$ m) | TUNGSTEN CARBIDE Balls<br>( $\phi$ in mm) | ZYRCONI OXIDE Balls<br>( $\phi$ in mm) |
|-------------------------------------|---|--|
| 100 / 250                           | 3 / 5 / 7 / 15 / 20                       | 10 / 15 / 20                           |

| MICRO TUBE Holders                                   | MICROTITER Holders                   | TUBE Holders                         | CUSTOM MADE Holders                                      |
|--|--------------------------------------|--------------------------------------|--|
| 1,5ml/2,0ml: 6, 12 and 24 places<br>0,2ml: 12 places | 96 well (3x standard or 1 deep well) | for 5ml, 15ml and 50ml conical tubes | Special holders for homogenization on customer's request |

## APPLICATIONS

*We develop applications in cooperation with our partners from institutes, universities and hospitals.*  
*Applications on customer's requests.*

### MOSTLY USED APPLICATIONS

| Material for examination  | Field of use                  | Adaptor   |
|---|-------------------------------|---|
| Granite, Marble, Clay mineral                                     | Geology                       | Stainless steel, 50ml                             |
| Chicken bone  | Biomedicine                   | Stainless steel, 50ml                             |
| Slag  | Metallurgy                    | Stainless steel, 50ml                             |
| Titanium dioxide  | Chemical industry             | Tungsten carbide, 25ml                            |
| Ceramic compacts  | Processing of ceramic powders | Tungsten carbide, 25ml                            |
| Hard material (rust, soil, bacteria, fungi, biofilm)              | Molecular biology             | PTFE, 6 x 2ml                                     |
| Soft material (tissue, blood, food, bacteria, fungi, cell, plant) | Molecular biology             | PTFE, 6 x 2ml                                     |
| Dry material (rust, soil, food, plant)                            | Molecular biology             | PTFE, 6 x 2ml                                     |
| Liquid material (blood, food, drink, bacteria, fungi, cell)       | Molecular biology             | PTFE, 6 x 2ml                                     |
| Body fluid samples  | Medicine                      | PTFE, 6 x 2ml                                     |
| Human blood   | Biomedicine                   | PTFE, 6 x 2ml                                     |
| Dog mastocytoma   | Biomedicine veterinary        | PTFE, 6 x 2ml                                     |
| Oil extraction from fermented broth (clavulanic acid)             | Pharmacy                      | Holder for 10 x 50ml conical tubes (FALCON tubes) |
| Disruption of intestine material, isolation of bacteria           | Biology                       | PTFE, 6 x 2ml                                     |
| DNA Extraction from Frozen Leaves                                 | Biology                       | Adaptors for 2 ml screw cup tubes                 |
| Bone and teeth grinding for DNA researches                        | Forensic science              | Stainless steel, 25ml forensic jar                |
| Human hair grinding for DNA researches                            | Forensic science              | Stainless steel, 35ml                             |
| THC definition, Country of Origin of Cannabis flower              | Forensic science              | PTFE, 6 x 2ml                                     |
| THC definition, Country of Origin of Cannabis stalk               | Forensic science              | Stainless steel, 50ml                             |
| THC definition, Country of Origin of Cannabis plant               | Forensic science              | Holder for 10 x 50ml conical tubes (FALCON tubes) |
| Definition of active substance and definition of steroide type    | Forensic science              | Stainless steel, 50                               |
| Chemical analysis of the heavy metals in food                     | Nutrition                     | PTFE jar, 50ml                                    |

*We reserve the right to alter specification details etc. without prior notice or liability!*

**DOMEL**<sup>®</sup>

**DOMEL, d.o.o.**, Otoki 21, 4228 Železniki  
**BU Laboratory Systems**, Na Plavžu 79, 4228 Železniki  
 Phone: +386 4 5117 500 Fax: +386 4 5117 501  
 WEB: <http://labs.domel.com> E-mail: [info.labs@domel.com](mailto:info.labs@domel.com)