

CENTRIC MF 220

SMALL MULTIPURPOSE CENTRIFUGES



MAIN FEATURES:

- > Ergonomic design
- > User friendly
- > Stainless steel chamber
- > Quick parameter settings
- > Large clearly visible parameters

Ergonomic and user friendly clinical centrifuge **CENTRIC MF 220** is instrument for multi purpose use and comes with seven different rotors, for processing tubes from 1,5-2,0 ml microtubes, up to 50 ml conical tubes.

Large illuminated LCD display offers great visibility of set parameters.

Centrifuge **CENTRIC MF 220** is simple model, easy to operate. Its stainless steel chamber offers easy cleaning of the centrifuge's interior.

TECHNICAL DATA	CENTRIC MF 220	
Max. rotation speed	200 to 15.500 rpm in steps of 100 rpm	
Max. centrifugal force	100 do 25.785 x g in steps of 100 x g	
Max. capacity	6 x 50 ml	
Time	10s to 99:50min, in steps of 10s, continuous run at HOLD function	
Programs	100	
Acceleration & Deceleration	10 / 10 levels	
Noise level (at max. speed)	≤ 60 dBA	
Fast spin with preselected speed	Yes	
Permitted ambient conditions	Temperature: 2°C to 35°C, Humidity: 75%, non-condensing	
Operation control	Microprocessor	
Motor type	Brushless induction motor, maintenance free	
Dimensions (W x D x H)	280 x 370 x 226 mm	
Weight	14,4 kg	
ORDERING INFORMATION	Order ref. No.	DOMEL code
CENTRIC MF 220		
230V / 50 - 60 Hz	442743	232.010
CENTRIC MF 220		
230V / 50 - 60 Hz	466525	232.010/UK
CENTRIC MF 220 120V		
120V / 50 - 60 Hz	445419	1232.010
CENTRIC MF 220 IVD		
230V / 50 - 60 Hz	465564	232.010/IVD
CENTRIC MF 220 IVD 120V		
120V / 50 - 60 Hz	465565	1232.010/IVD

DOMEL

DOMEL, d.o.o., Otoki 21, 4228 Železniki
Domel LABS, Na Plavžu 79, 4228 Železniki

Phone: +386 4 5117 525
E-mail: info.labs@domel.com
WEB: <http://labs.domel.com>



Domel LABS

ANGLE ROTORS:



RA 24/2 - Order ref. No.: 437480

- Angle rotor with transparent plastic lid
- 24 x 1,5/2,0 ml, optional adapters for PCR tubes
- Max. tube dimensions: $\phi 11 \times 40$ mm
- Max. speed: 15500 rpm
- Max. centrifugal force: 22830 x g



RA 12/5 - Order ref. No.: 449201

- Angle rotor with transparent plastic lid
- 12 x 5,0 ml
- Max. tube dimensions: $\phi 17 \times 54$ mm
- Max. speed: 15500 rpm
- Max. centrifugal force: 25785 x g



RA 8/15 - Order ref. No.: 438526

- Angle rotor with shields
- 8 x 15 ml
- optional adapters A 5 for tubes length from 75 mm to 90 mm
- Max. tube dimensions: $\phi 17 \times 120$ mm
- Max. speed: 6000 rpm
- Max. centrifugal force: 4185 x g, with adapters A 5 4090 x g



RA 12/12 - Order ref. No.: 447993

- Angle rotor with shields
- 12 x 12 ml, 6 x 15 ml
- optional adapters A 5 for tubes length from 75 mm to 90 mm
- Max. tube dimensions: $\phi 17 \times 120$ mm
- Max. speed: 6000 rpm
- Max. centrifugal force: 4185 x g, with adapters A 5 4090 x g



RA 6/50 - Order ref. No.: 438545

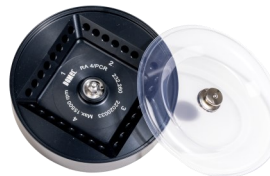
- Angle rotor with shields
- 6 x 50 ml conical
- Max. tube dimensions: $\phi 29 \times 120$ mm
- Max. speed: 6000 rpm
- Max. centrifugal force: 4185 x g

SPECIAL APPLICATIONS ROTORS:



RH 24 - Order ref. No.: 449568

- Hematocrit rotor with reading device
- 24 x glass hematocrit capillares
- Max. capillares dimensions: $\phi 1,6 \times 75$ mm
- Max. speed: 15500 rpm
- Max. centrifugal force: 24710 x g



RA 4/PCR - Order ref. No.: 449767

- Angle PCR rotor
- 4 x 8 PCR strip
- Max. tube dimensions: $\phi 9 \times 22$ mm
- Max. speed: 15500 rpm
- Max. centrifugal force: 15040 x g